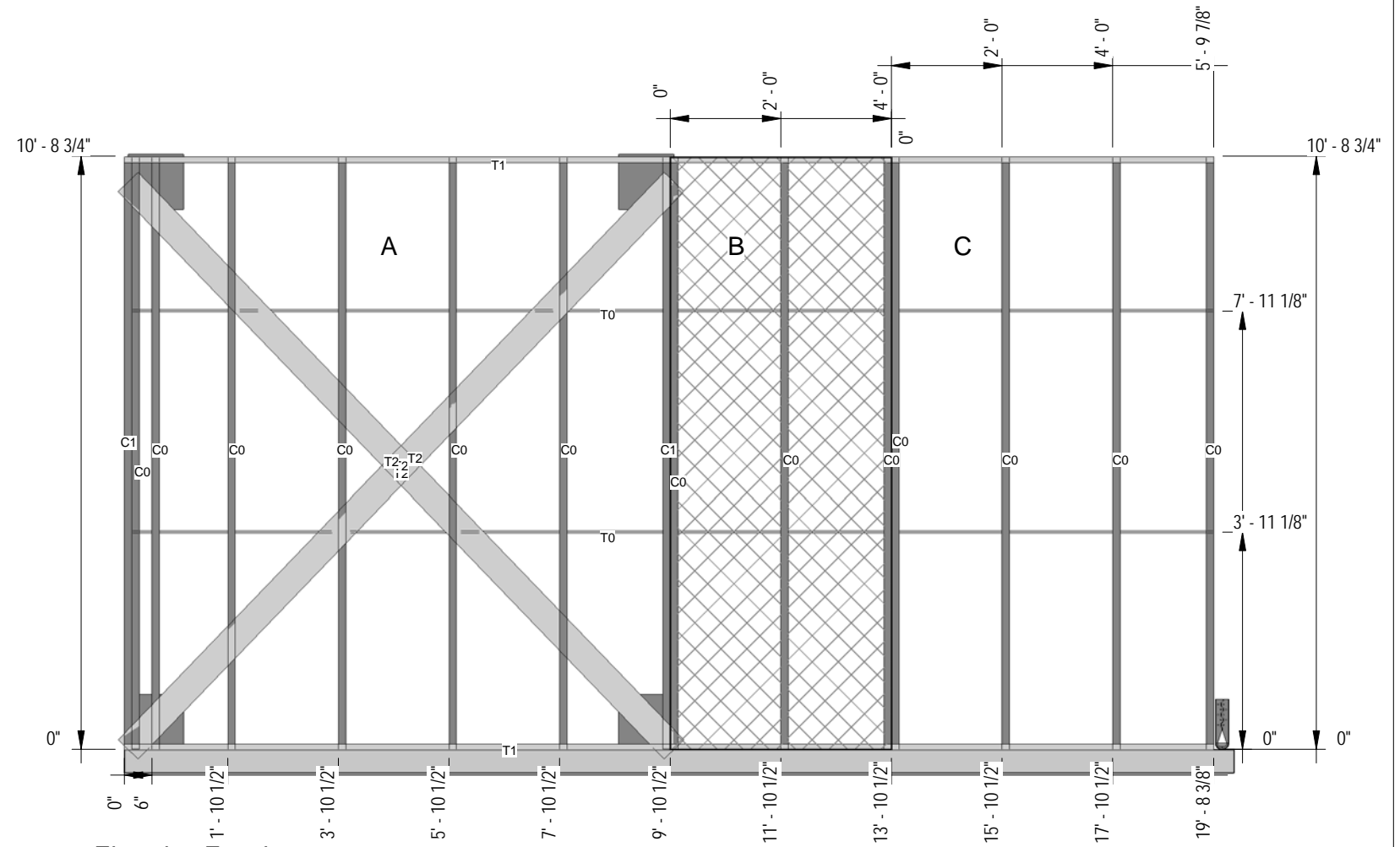




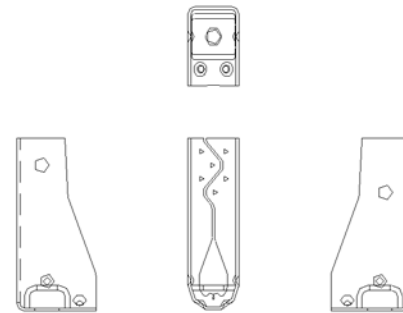
3 Panel120-3D View

Lbl	Qty	Member	Length	W(lb)
C0	13	600S162-54	10' - 8 5/8"	14.188
C1	2	600S162-54	10' - 8 1/2"	14.175
T0	2	150CRC-54	19' - 6 161/256"	25.882
T1	2	600T125-54	19' - 8 3/8"	26.074
T2	4	0600STR-54	14' - 2 239/256"	18.855

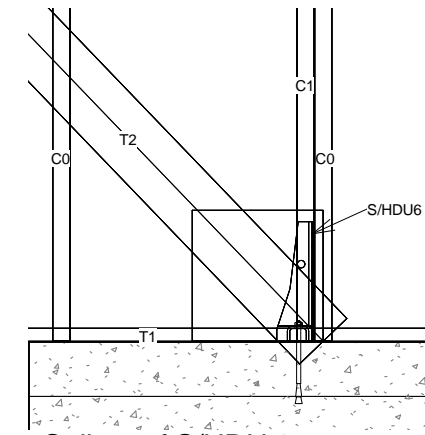
4 Bill of Material  
3/8" = 1'-0"



2 Elevation Framing  
3/8" = 1'-0"



S/HDU 6



1 Callout of S/HDU 6  
3/4" = 1'-0"

**TRANSCON**  
**STEEL**  
FRAMING THE FUTURE

Review

Daigle Residence	
Drawn by	Scale
GMJ	As indicated

*Shop Plan			
Date	Size	Project number	Drawing number
05/16/12	A	10127	Panel120

THE DRAWINGS HEREIN ARE MANUFACTURING DRAWINGS ONLY. CONTRACTOR SHALL BE SOLELY RESPONSIBLE FOR VERIFYING ALL DIMENSIONS, SITE CONDITIONS, AND THAT ALL STATE AND LOCAL CODE REQUIREMENTS ARE MET. PLEASE CONTACT TRANSCON STEEL FOR ANY ADDITIONAL CLARITY IN NEEDED PRIOR TO INSTALLATION.