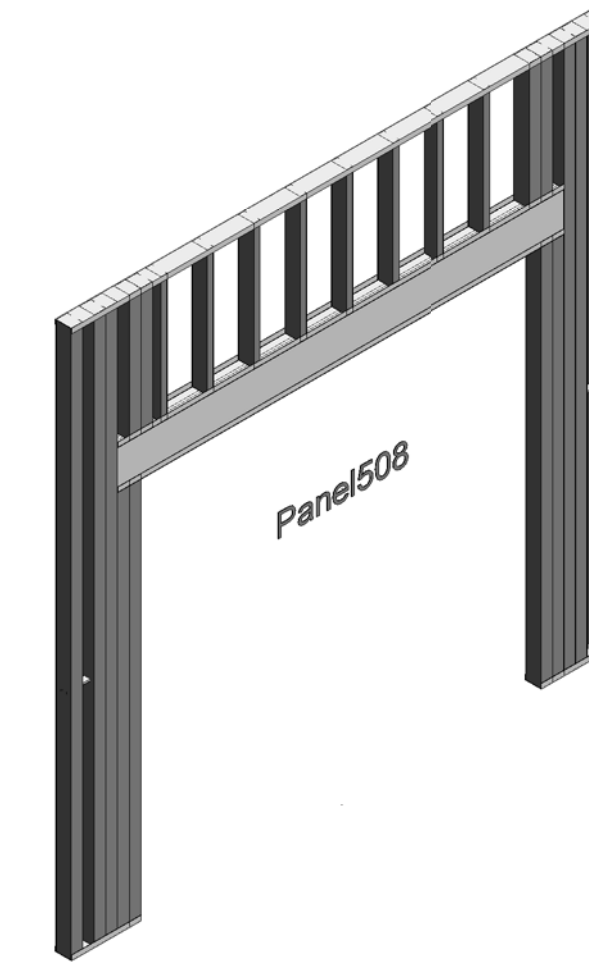
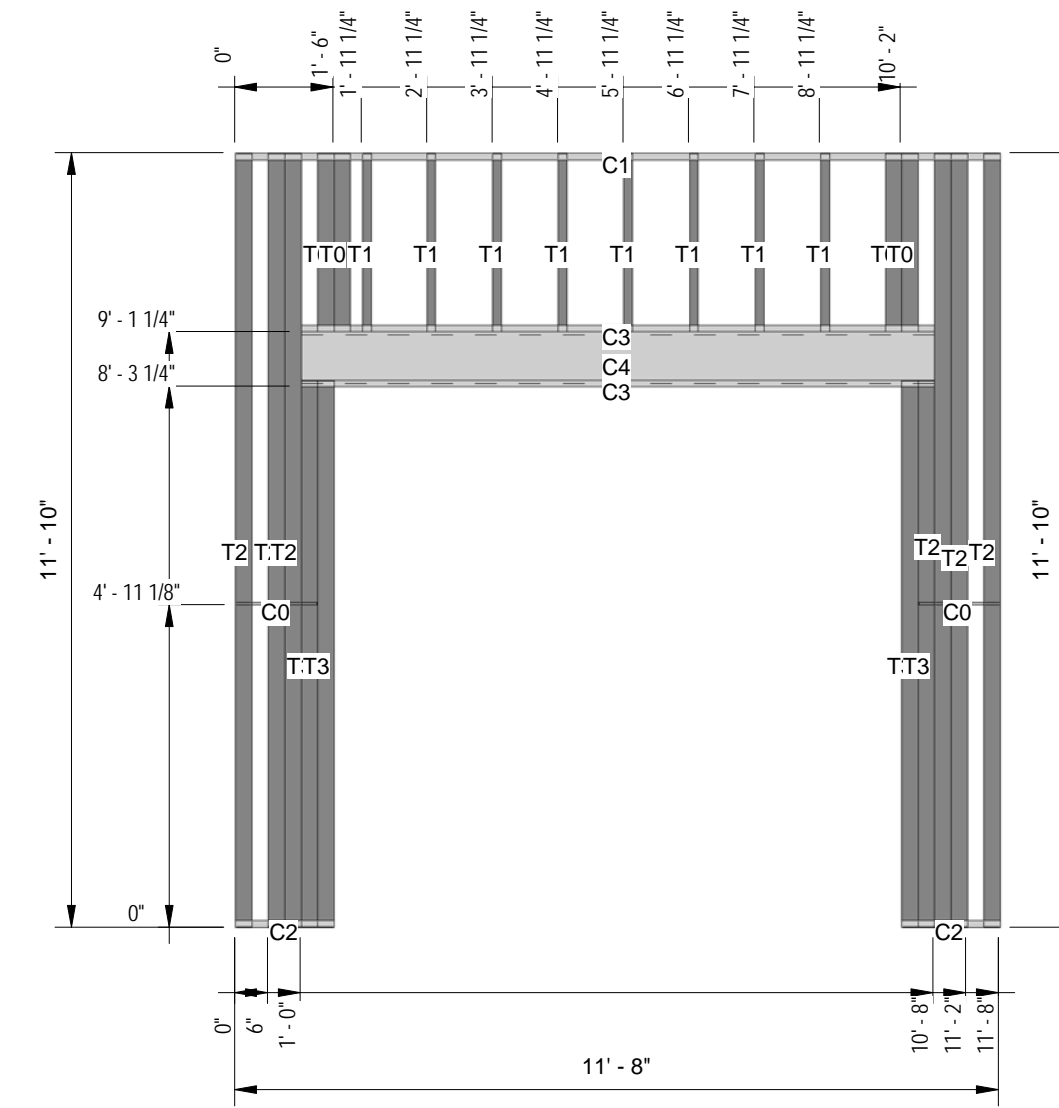


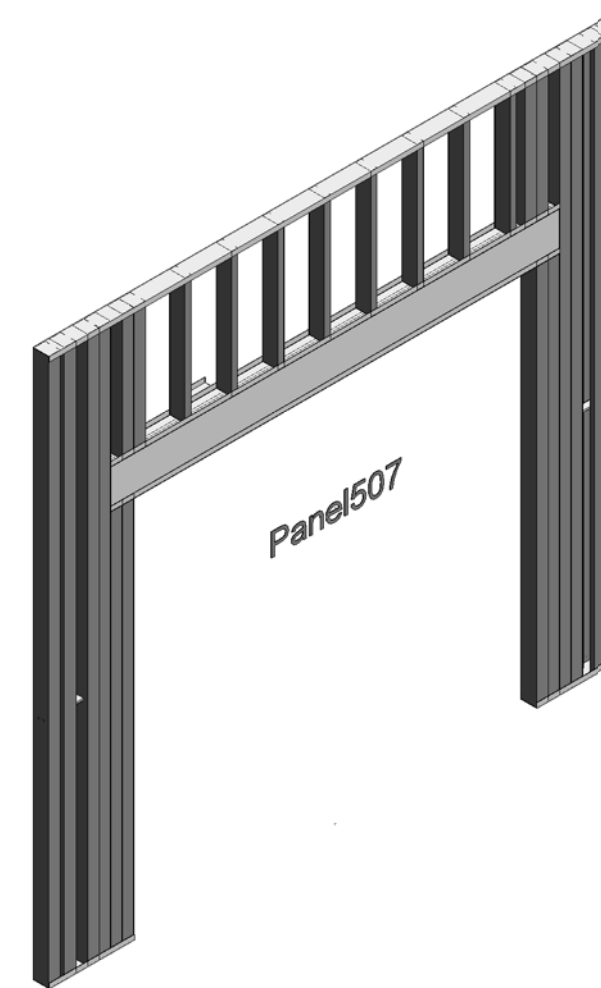
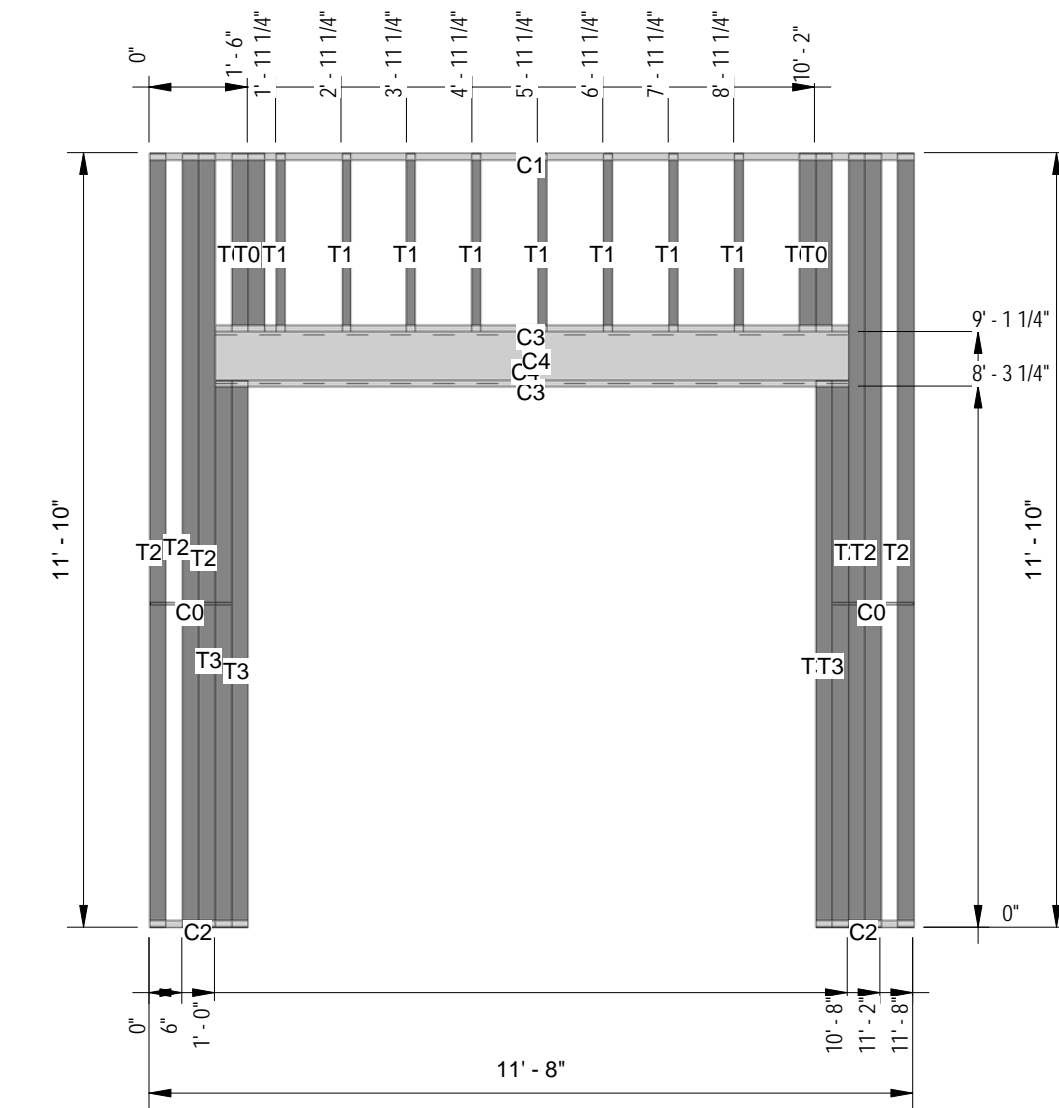
Lbl	Qty	Member	Length	W(lb)
C0	2	150CRC-54	11'-2.3/4"	0.604
C1	1	400T125-97	11'-8"	5.728
C2	2	400T125-97	1'-6"	0.736
C3	2	400T125-68	9'-8"	4.746
C4	2	1000S162-97	9'-8"	4.746
T0	4	400S300-97	2'-8.5/8"	1.335
T1	8	400S162-54	2'-8.5/8"	1.335
T2	6	400S300-97	11'-9.3/4"	5.8
T3	4	400S300-97	8'-4.1/8"	4.097

10 Bill of Material  
3/8" = 1'-0"



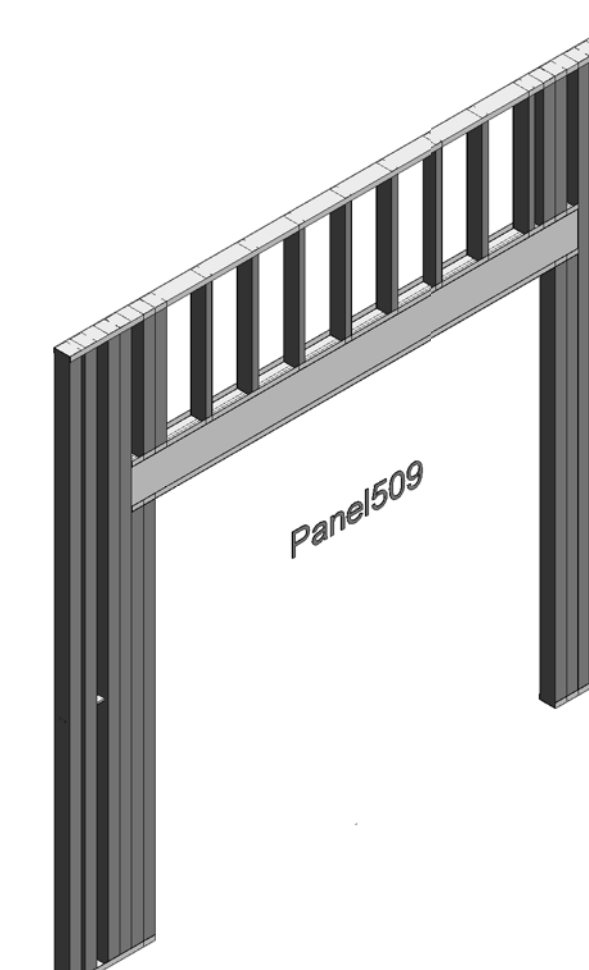
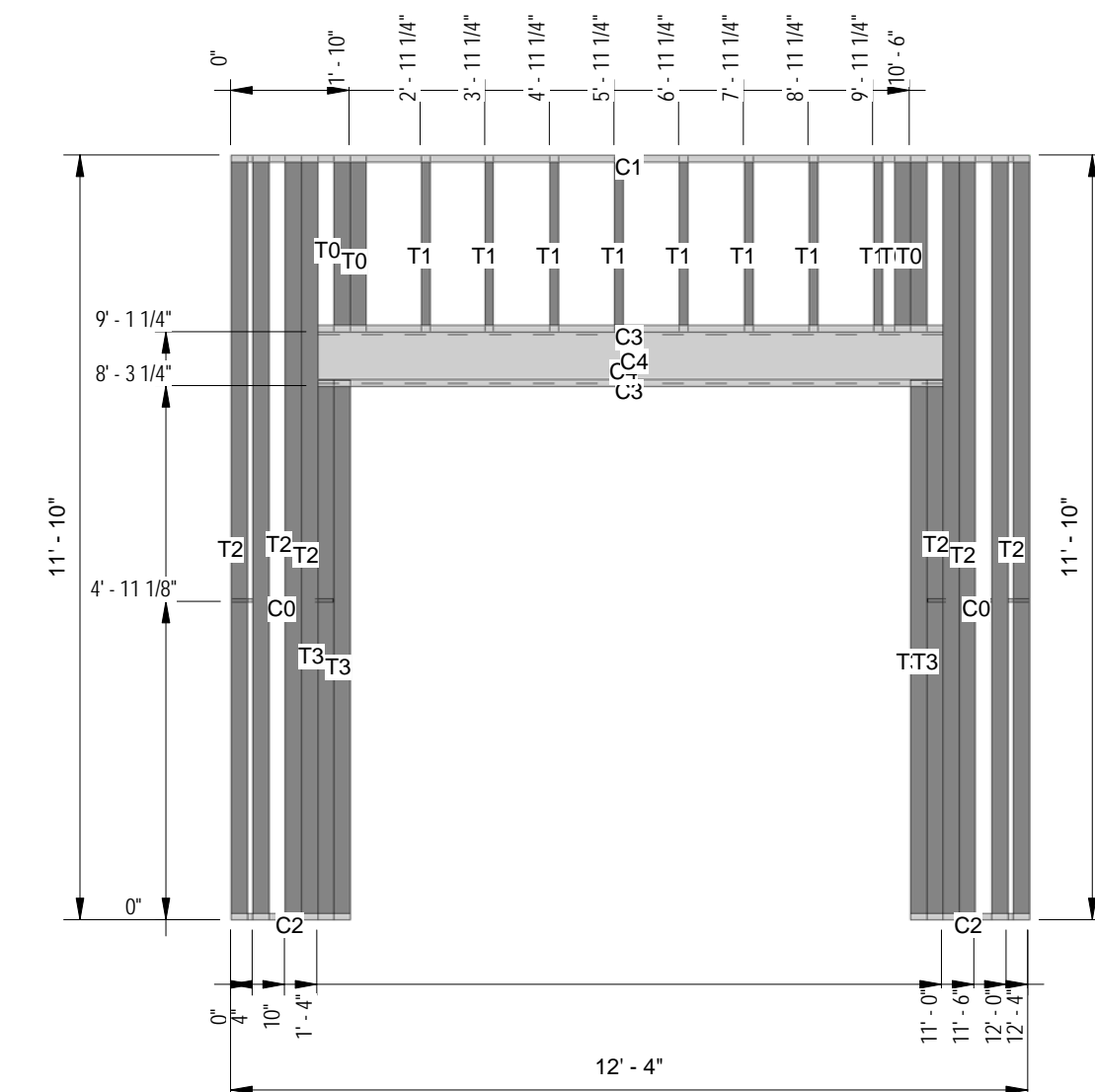
Lbl	Qty	Member	Length	W(lb)
C0	2	150CRC-54	11'-2.3/4"	0.604
C1	1	400T125-97	11'-8"	5.728
C2	2	400T125-97	1'-6"	0.736
C3	2	400T125-68	9'-8"	4.746
C4	2	1000S162-97	9'-8"	4.746
T0	4	400S300-97	2'-8.5/8"	1.335
T1	8	400S162-54	2'-8.5/8"	1.335
T2	6	400S300-97	11'-9.3/4"	5.8
T3	4	400S300-97	8'-4.1/8"	4.097

12 Bill of Material  
3/8" = 1'-0"



Lbl	Qty	Member	Length	W(lb)
C0	2	150CRC-54	11'-6.3/4"	0.767
C1	1	400T125-97	12'-4"	6.056
C2	2	400T125-97	1'-10"	0.9
C3	2	400T125-68	9'-8"	4.746
C4	2	1000S162-97	9'-8"	4.746
T0	4	400S300-97	2'-8.5/8"	1.335
T1	8	400S162-54	2'-8.5/8"	1.335
T2	8	400S300-97	11'-9.3/4"	5.8
T3	4	400S300-97	8'-4.1/8"	4.097

11 Bill of Material  
3/8" = 1'-0"



Lbl	Qty	Member	Length	W(lb)
C0	2	150CRC-54	11'-6.3/4"	0.767
C1	1	400T125-97	12'-4"	6.056
C2	2	400T125-97	1'-10"	0.9
C3	2	400T125-68	9'-8"	4.746
C4	2	1000S162-97	9'-8"	4.746
T0	4	400S300-97	2'-8.5/8"	1.335
T1	8	400S162-54	2'-8.5/8"	1.335
T2	8	400S300-97	11'-9.3/4"	5.8
T3	4	400S300-97	8'-4.1/8"	4.097

13 Bill of Material  
3/8" = 1'-0"

