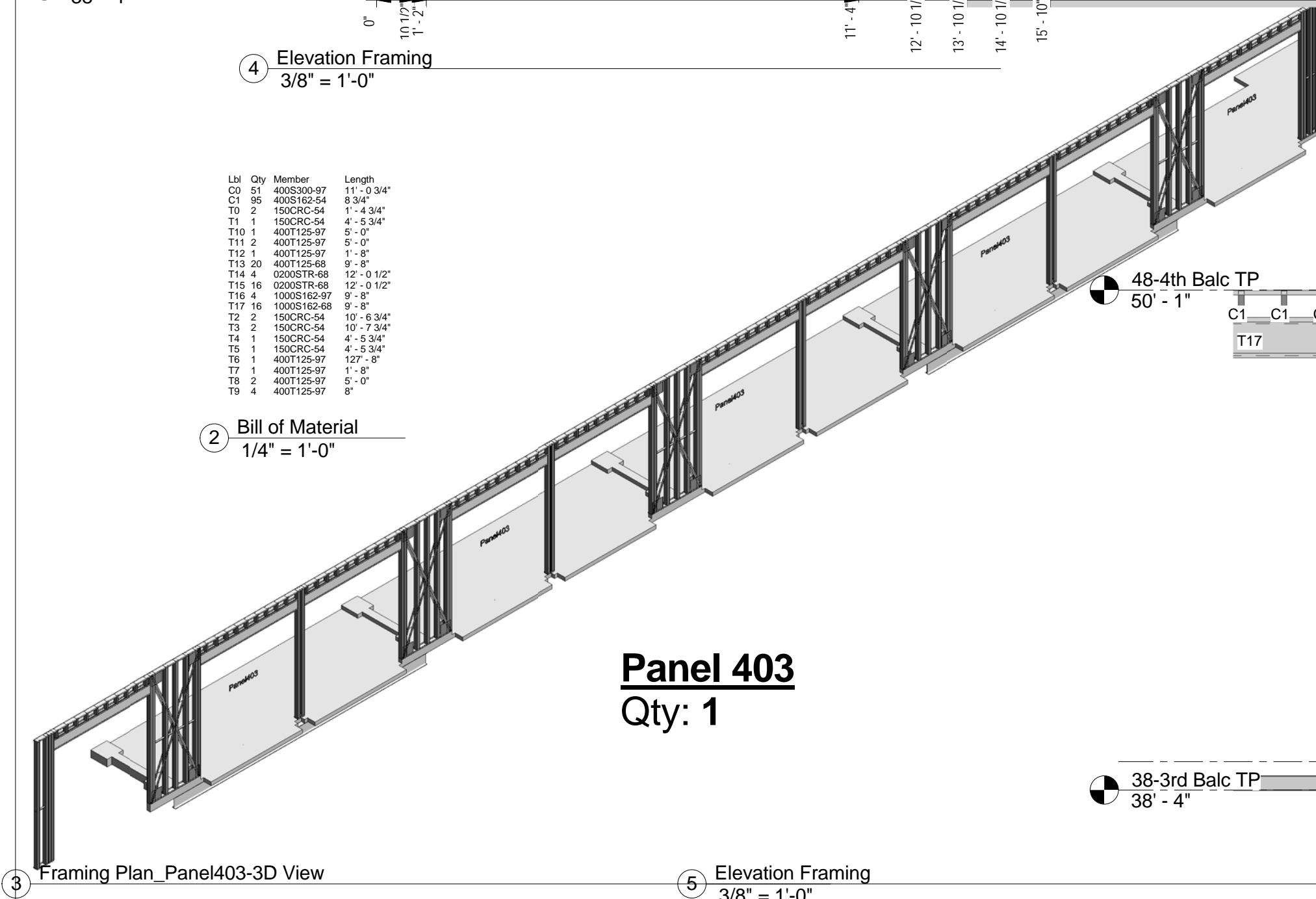


4 Elevation Framing
3/8" = 1'-0"

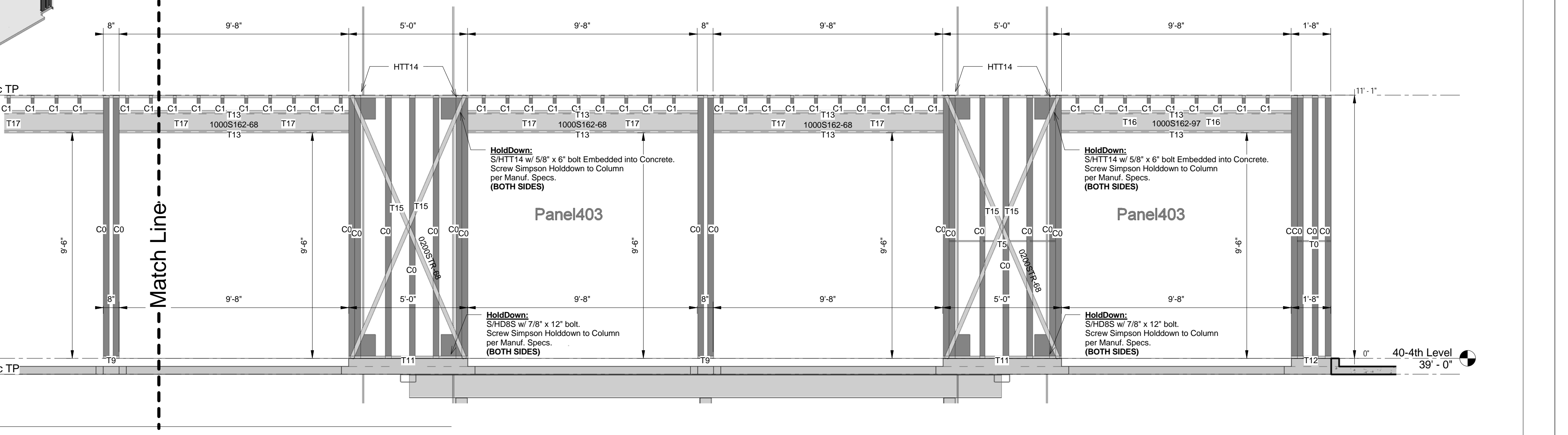
2 Bill of Material
1/4" = 1'-0"



3 Framing Plan_Panel403-3D View

Panel 403
Qty: 1

5 Elevation Framing
3/8" = 1'-0"



TRANSCON STEEL
FRAMING THE FUTURE
2200 S. Church Street
Georgetown, TX 78627
512-930-0066 office
512-930-0061 fax
www.TransconSteel.com
Support@TransconSteel.com

Revision		Riverview at Gretna		Panel 403	
Revised Holddown Anchors to 5/8" 7-2-2012		Date		Project number	
Drawn by		Scale		Drawing number	
GMJ		As indicated		11-107 Balc4.2	

THE DRAWINGS HEREIN ARE MANUFACTURING DRAWINGS ONLY. CONTRACTOR SHALL BE SOLELY RESPONSIBLE FOR VERIFYING ALL DIMENSIONS, SITE CONDITIONS, AND THAT ALL STATE AND LOCAL CODE REQUIREMENTS ARE MET. PLEASE CONTACT TRANSCON STEEL FOR ANY ADDITIONAL CLARITY IN NEEDED PRIOR TO INSTALLATION. TRANSCON IS NOT RESPONSIBLE FOR ANY COSTS ASSOCIATED TO MATERIALS OR LABOR FOR THE REPAIR OR MODIFICATION OF FRAMING ASSEMBLIES.