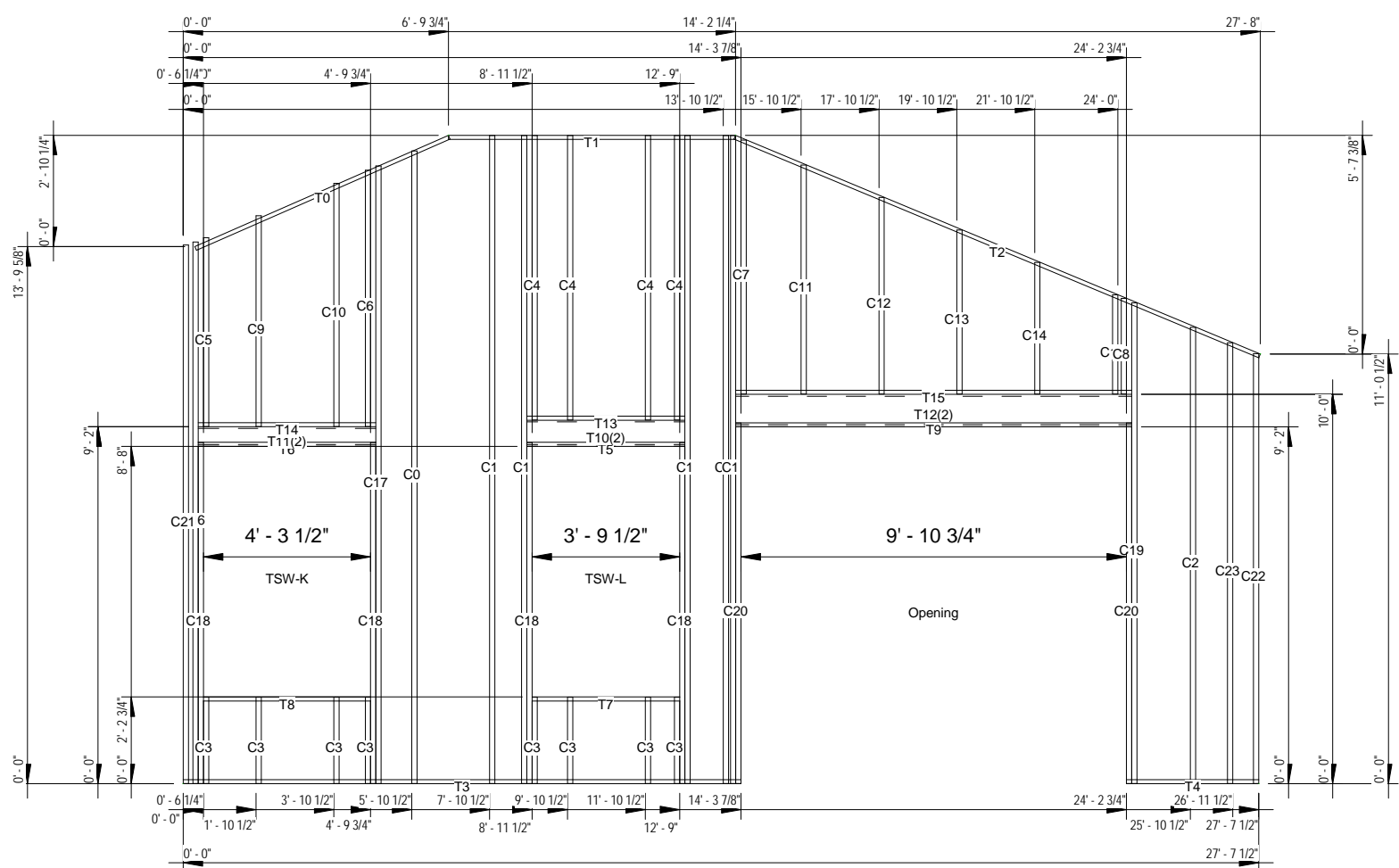


3 Panel1-3D View

Lbl	Qty	Member	Length	W(lb)
C0	1	800S162-43	16' - 3"	21.511
C1	5	800S162-43	16' - 7 5/8"	22.032
C2	1	800S162-43	11' - 8 5/8"	15.513
C3	8	800S162-43	2' - 2 5/8"	2.937
C4	4	800S162-43	7' - 3 5/8"	9.672
C5	1	800S162-43	4' - 10 1/4"	6.422
C6	1	800S162-43	6' - 7"	8.715
C7	1	800S162-43	6' - 6 1/4"	8.639
C8	1	800S162-43	2' - 5 1/2"	3.252
C9	1	800S162-43	5' - 5"	7.167
C10	1	800S162-43	6' - 3"	8.269
C11	1	800S162-43	5' - 10 5/8"	7.787
C12	1	800S162-43	5' - 0 5/8"	6.684
C13	1	800S162-43	4' - 2 5/8"	5.581
C14	1	800S162-43	3' - 4 5/8"	4.477
C15	1	800S162-43	2' - 6 5/8"	3.374
C16	1	800S162-43	13' - 10 7/8"	18.412
C17	1	800S162-43	15' - 10 3/8"	21.003
C18	4	800S162-43	8' - 9 1/8"	11.596
C19	1	800S162-43	12' - 4 1/8"	16.345
C20	2	800S162-43	9' - 3 1/8"	12.258
C21	1	800S162-43	13' - 10"	18.312
C22	1	800S162-43	11' - 0 1/2"	14.62
C23	1	800S162-43	11' - 3 7/8"	14.988
T0	1	800T125-43	7' - 1 3/8"	9.415
T1	1	800T125-43	7' - 4 1/2"	9.762
T2	1	800T125-43	14' - 7 1/4"	19.327
T3	1	800T125-43	14' - 3 7/8"	18.964
T4	1	800T125-43	3' - 4 3/4"	4.498
T5	1	800T125-43	4' - 0 3/4"	5.377
T6	1	800T125-43	4' - 6 3/4"	6.039
T7	1	800T125-43	3' - 9 1/2"	5.019
T8	1	800T125-43	4' - 3 1/2"	5.681
T9	1	800T125-43	10' - 2 1/8"	13.463
T10	2	800S162-54	4' - 0 3/4"	5.377
T11	2	600S162-54	4' - 6 3/4"	6.039
T12	2	1000S200-54	10' - 2 1/8"	13.463
T13	1	600T125-43	4' - 0 3/4"	5.377
T14	1	600T125-43	4' - 6 3/4"	6.039
T15	1	600T125-43	10' - 2 1/8"	13.463

4 Bill of Material
3/8" = 1'-0"



2 Elevation Framing
1/4" = 1'-0"

1 Panel1-FloorView-Framing
1/4" = 1'-0"



Review	GUESTHOUSE		*Panel1				THE DRAWINGS HEREIN ARE MANUFACTURING DRAWINGS ONLY. CONTRACTOR SHALL BE SOLELY RESPONSIBLE FOR VERIFYING ALL DIMENSIONS, SITE CONDITIONS, AND THAT ALL STATE AND LOCAL CODE REQUIREMENTS ARE MET. PLEASE CONTACT TRANSCON STEEL FOR ANY ADDITIONAL CLARITY IN NEEDED PRIOR TO INSTALLATION.
	Drawn by GMJ	Scale As indicated	Date 11/05/11	Size A	Project number 11-109	Drawing number Panel1(0)	