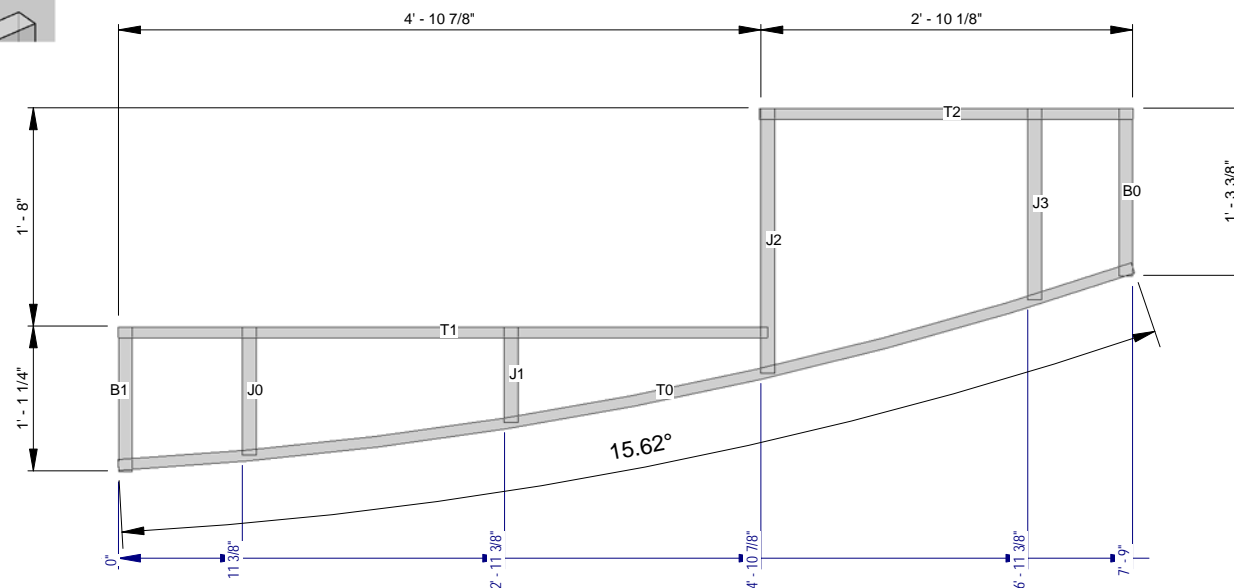
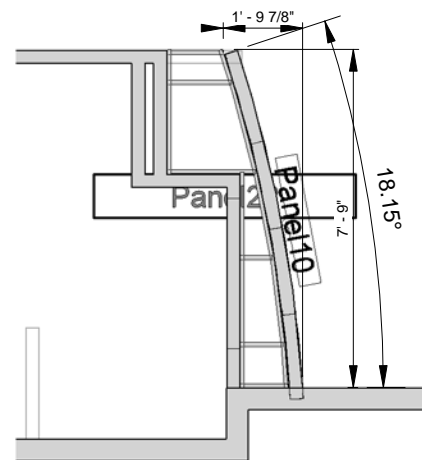


Lbl	Qty	Member	Length
CO	5	362S125-18	8 3/8"
TO	2	362T100-18	8' - 1 1/4"

① Bill of Material
3/8" = 1'-0"



Lbl	Qty	Member	Length
B0	1	362S125-18	1' - 3 87/256"
B1	1	362S125-18	1' - 1 67/256"
J0	1	362S125-18	11 3/4"
J1	1	362S125-18	8 3/4"
J2	1	362S125-18	2' - 0 1/4"
J3	1	362S125-18	1' - 5 1/2"
T0	1	362T100-18	7' - 11 11/256"
T2	1	362T100-18	2' - 10 1/4"
T1	1	362T100-18	4' - 11 1/2"

⑥ Bill of Material
1/4" = 1'-0"

TRANSCON STEEL FRAMING THE FUTURE	Review	Marriott Courtyard Salisbury , NC		Panel10 & 22			THE DRAWINGS HEREIN ARE MANUFACTURING DRAWINGS ONLY. CONTRACTOR SHALL BE SOLELY RESPONSIBLE FOR VERIFYING ALL DIMENSIONS, SITE CONDITIONS, AND THAT ALL STATE AND LOCAL CODE REQUIREMENTS ARE MET. PLEASE CONTACT TRANSCON STEEL FOR ANY ADDITIONAL CLARITY IN NEEDED PRIOR TO INSTALLATION.
		Drawn by	Scale As indicated	Date 07/12/12	Size A	Project number 12-105	