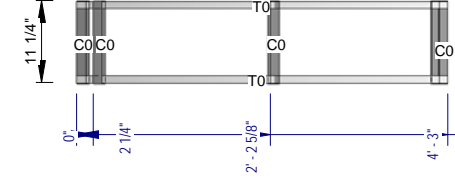


③ Panel 29
1/2" = 1'-0"

Lbl	Qty	Member	Length
CO	3	362S125-18	11 3/8"
TO	2	362T100-18	4' - 0 5/8"

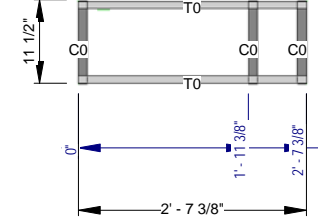
① Bill of Material
3/8" = 1'-0"



④ Panel 30
1/2" = 1'-0"

Lbl	Qty	Member	Length
CO	4	362S125-18	11 3/8"
TO	2	362T100-18	4' - 2 7/8"

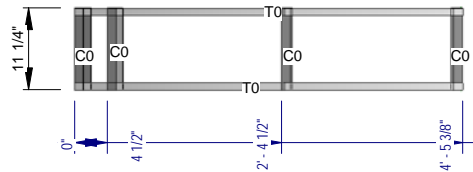
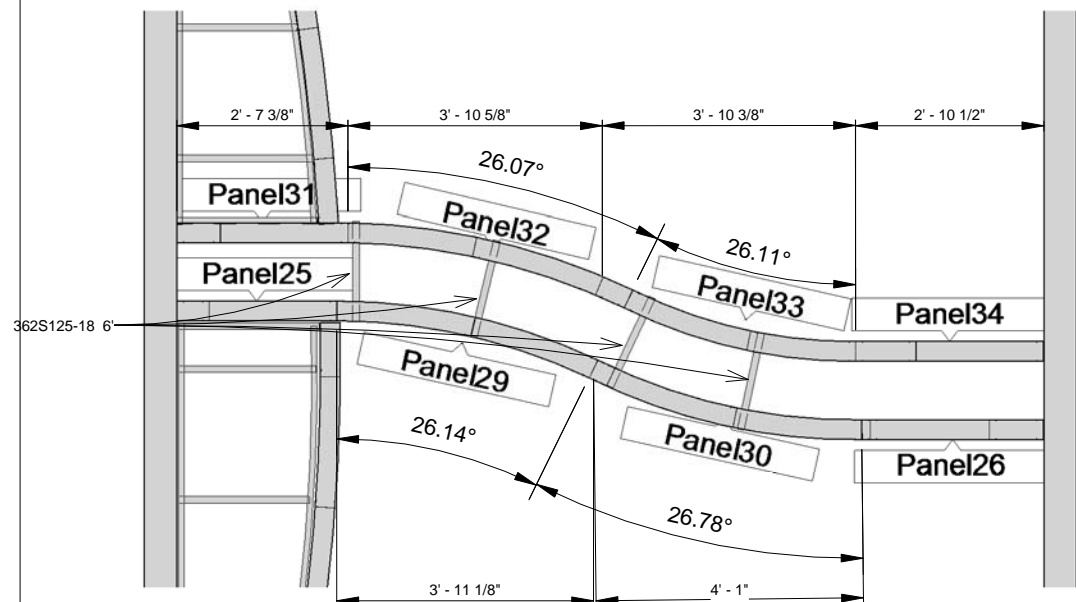
⑨ Bill of Material
3/8" = 1'-0"



⑦ Panel 31
1/2" = 1'-0"

Lbl	Qty	Member	Length
CO	3	362S125-18	11 3/8"
TO	2	362T100-18	2' - 7 3/8"

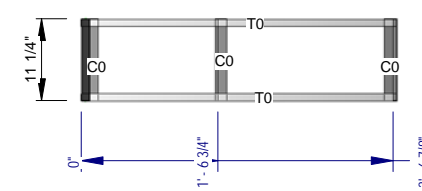
⑩ Bill of Material
3/8" = 1'-0"



⑤ Panel 32
1/2" = 1'-0"

Lbl	Qty	Member	Length
CO	4	362S125-18	11 3/8"
TO	2	362T100-18	4' - 5 1/4"

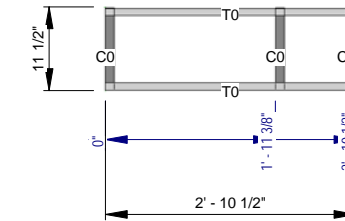
⑪ Bill of Material
3/8" = 1'-0"



⑥ Panel 33
1/2" = 1'-0"

Lbl	Qty	Member	Length
CO	3	362S125-18	11 3/8"
TO	2	362T100-18	3' - 7 1/8"

⑫ Bill of Material
3/8" = 1'-0"



⑧ Panel 34
1/2" = 1'-0"

Lbl	Qty	Member	Length
CO	3	362S125-18	11 3/8"
TO	2	362T100-18	2' - 10 1/2"

⑬ Bill of Material
3/8" = 1'-0"

TRANSCON
STEEL
FRAMING THE FUTURE

Review

Marriott Courtyard Salisbury , NC	
Drawn by	Scale
	As indicated

Panel29-34			
Date	Size	Project number	Drawing number
07/12/12	A	12-105	2.13

THE DRAWINGS HEREIN ARE MANUFACTURING DRAWINGS ONLY. CONTRACTOR SHALL BE SOLELY RESPONSIBLE FOR VERIFYING ALL DIMENSIONS, SITE CONDITIONS, AND THAT ALL STATE AND LOCAL CODE REQUIREMENTS ARE MET. PLEASE CONTACT TRANSCON STEEL FOR ANY ADDITIONAL CLARITY IN NEEDED PRIOR TO INSTALLATION.